

Courses up Monongahala.

Begin at a Sug & Running

S. 15° W 52 p.

S. 25 W. 52 p.

S 40. W. 50. p.

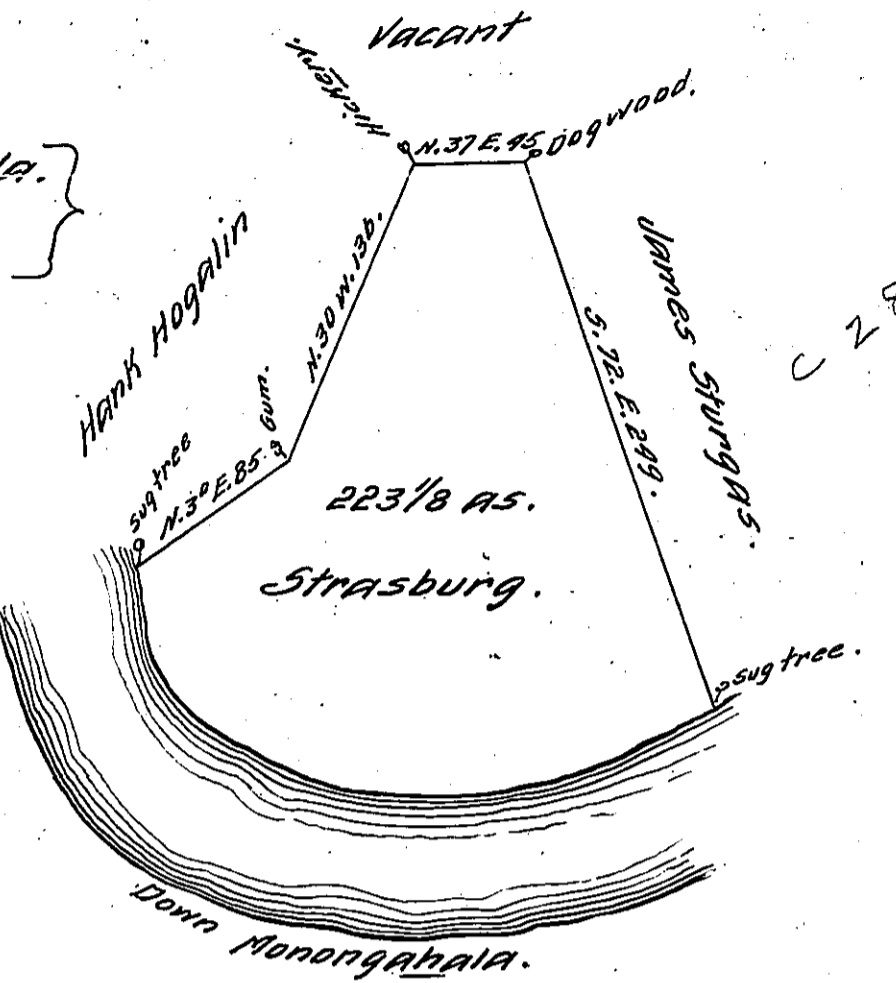
S. 56. W. 38 p.

N. 85 W. 59 p.

West --- 47 p.

293

to a sug tree.



In pursuance of an order No. 3090 dated 17th April, 1769. the above is a draught of a tract of land called Strasburg.

Situated on the west side Monongahala containing 223.0.24 acres with the usual allowance of 6 pc. for roads, highways &c. Surveyd. for Nicholas Crist 20th. July, 1769.

To John Lukens Esqr.

James Hendricks.

Surveyor General.

IN TESTIMONY that the above is a copy of the original remaining on file in the Department of Internal Affairs of Pennsylvania, made conformably to an Act of Assembly approved the 16th day of February, 1833, I have hereunto set my Hand and caused the Seal of said Department to be affixed at Harrisburg, this first day of February 1911

*Henry Howe*  
Secretary of Internal Affairs.